

County of Orange Employee
Tuition Reduction Scholarship



NATIONAL
UNIVERSITY



The **County of Orange Employee Tuition Reduction Scholarship** is a great benefit for working adults who want to reach specific educational goals, but find it challenging to fit classes into their busy life. National University is offering all employees employed by County of Orange a 15 percent Tuition Reduction Scholarship and a waiver of the application fee towards earning an associate's, bachelor's, or master's degree or certification.

IDEAL FOR WORKING PROFESSIONALS

National University is a great choice for working professionals because it offers:

A flexible one-course-per-month format that provides concentrated learning so you can focus on one subject at a time and complete a full course in a single month.

Year-round enrollment so you can start your education whenever your personal and work schedules allow.

Online or on-campus options that give you the choice of taking classes at one of the school's 28 campuses or online.

Fully accredited, which means your classes and instructors meet high standards and your education is respected and transferable.

A nonprofit, private university environment that is focused on helping you succeed in reaching your educational goals and achieving career success.

AREAS OF STUDY

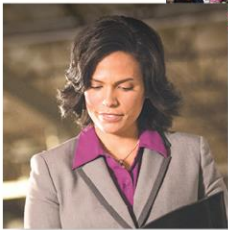
National offers more than 120 degrees with more than 85 degree programs that can be taken completely online. Choose your path of study from the offerings below.

- **Arts and Sciences** courses include alcohol and drug abuse counseling, biology, communication, creative writing, English, environmental science, film studies, forensic sciences, general studies, gerontology, global studies, history, human behavior, interdisciplinary studies, linguistics, mathematics, natural sciences, organizational behavior, performance psychology, political science, professional golf management, psychology, sociology, Spanish, sport psychology, and strategic communications

- **Business and Management** courses include accounting, business administration, economics, finance, global management, hospitality, human resources, international business, leadership, management, marketing, and social media

- **Education** courses include teaching in early childhood development, English, interdisciplinary studies, math, sciences, Spanish, and special education, administration, educational technology, leadership, school counseling and psychology, as well as California and Nevada credential programs

- **Engineering and Computing** includes courses in applied engineering, biomedical engineering technology, construction engineering technology, construction management, computer science, cyber security, digital media design, data analytics, manufacturing design engineering, engineering management, environmental engineering, homeland security and emergency management, information systems, information technology management, management information systems, wireless communications, and sustainability management



- **Health and Human Services*** courses include allied health, community health, clinical lab sciences, clinical regulatory affairs, healthcare administration, health informatics, nursing, and public health
- **Professional Studies** courses include alternative dispute resolution, business law, criminal justice administration, digital cinema, digital journalism, homeland security and emergency management, journalism, paralegal studies, pre-law, professional screenwriting, and public administration
- **Extended learning options** include courses in education, healthcare, medical billing and coding, paralegal studies, and professional and personal development

FACULTY

Many National University faculty members are recognized for their accomplishments within academia and the workplace. More than 80 percent of full-time faculty hold the highest level of degree from significant institutions of higher education throughout the country. Adjunct faculty are highly respected professionals in the fields in which they teach. These faculty members add a practical component to the curriculum, as well as a vital link to the workplace.

ACCREDITATION

National University is accredited and approved by 14 separate accrediting bodies, including the Accrediting Commission for Senior Colleges and Universities of the Western Association of Schools and Colleges (WASC). National is known for its quality and for providing graduates an edge in today's competitive labor market. From business and information technology to psychology and education, the curriculum combines concept, theory, and application so that what is learned in the classroom is relevant to the workplace.

ADMISSIONS

Admission to undergraduate and graduate programs at National University is based on evidence, including a student's academic record at other institutions. Some professional degrees may require additional review requirements.

Applications are reviewed year-round, and qualified applicants can begin classes any month of the year, depending on course offerings.

FINANCIAL AID

As a National University student, you may also be eligible for financial aid in the form of federal grants, loans, and scholarships. The purpose of financial aid is to bridge the gap between educational cost and a student's resources. National University has designated admission advisors and financial aid advisors to assist you through the enrollment and financial aid process.

KEEP LEARNING, CONTACT:

National University
 Phone: (714) 429-5100
 E-mail: Admissions-Spectrum@nu.edu



**NATIONAL
UNIVERSITY**

* Pre-licensure nursing programs and radiation therapy are not eligible for this scholarship program

National University is a preferred partner for higher education for County of Orange. County of Orange employees who are students of National University will acknowledge and will be personally responsible to the University for payment of fees and tuition. County of Orange employees wishing to enroll will be required to apply for admission to National University and be admitted in accordance with the University's existing admission requirements. County of Orange will verify employment status for applicants and students for the University. Other offer restrictions may apply.